



EFI XFlow

The Easy, Versatile and Powerful Production Solution

Graphic Arts Solutions



Beat the Competition with Amazing Efficiency using a Powerful Make-Ready Solution

Companies in the print industry, like yours, are making more demands on their printing hardware and software due to the high work volume, complex documents and aggressive deadlines. EFI™ XFlow solves these challenges by increasing productivity, reducing errors and misprints, making last-minute corrections easier and controlling costs. It handles the most demanding wide-format inkjet printing tasks with ease, and is a favourite of agencies and the digital printing market.

Improve your Workflows, Improve your Company

XFlow provides an automated make-ready tool that prepares jobs for printing quickly, easily and accurately, virtually regardless of their formats and quality. It uses workflows and presets for standard tasks, so you achieve repeatable results every time.

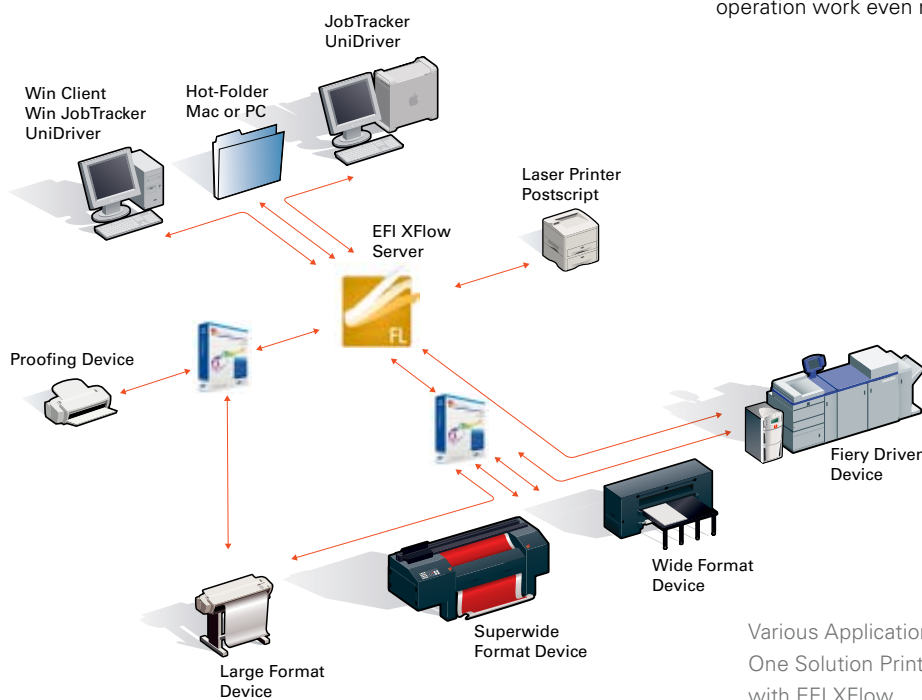
In addition, XFlow allows you to enjoy great data input flexibility thanks to UniDriver, RemoteJobTracker and Hot Folders. UniDriver allows you to print directly in your workflow out of Macintosh® OS X and Windows-based applications and adapt workflow settings easily to suit the print job. Within the network, the browser-based RemoteJobTracker gives you an overview to check job status, submission and job approval, while Hot Folders increase productivity and efficiency.

Streamline Production with PDF-Based Workflows and Certification

XFlow's PDF-based workflow standardises and transforms all jobs in virtually every file format, such as TIFF/IT, DCS, PS, and all kinds of Microsoft Office documents, into Adobe® PDF files, eliminating the headaches and security issues associated with document preparation. In addition XFlow also accepts PPML Files and converts them over to multi page PDF documents. PPML is the standard language for variable data printing.

Its automated PDF certification allows you to easily and automatically certify your PDF-Documents based on the Enfocus Certified Technology, the standard for secure data exchange all around the world.

XFlow's Browser based JobTracker enables people in your network to review jobs at any approval stage and in the preflight to make your operation work even more efficient.



Various Applications,
One Solution Print Job Management
with EFI XFlow



Automate Preflight and Correction

EFI XFlow automates preflight according to your requirements, reducing costly mistakes. For instance, images, graphics, fonts and colour profiles are checked. Errors are reported and automatically fixed, making sure that all objects are embedded correctly to avoid misprints. Also, colours, logos, headers and other objects can be exchanged or removed automatically or manually based on your requirements. In addition, XFlow is able to change the image resolution and the file compression to optimise the files for the outputting RIP, resulting in faster RIP time.

Generate Consistent Colour Every Time

The solution provides automatic object-related colour management based on your customers' requirements, guaranteeing consistent colour on every print regardless of the complexity involved. Its ColorWise® Module gives you the control to provide specific and independent treatment of images, text and vector graphics in different color spaces.

Capitalise on Powerful Image Enhancement

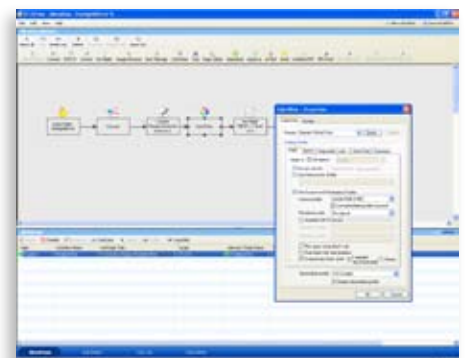
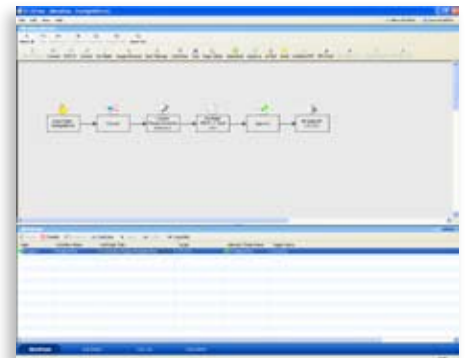
The ImageEnhance module is ideal for photo applications and heavy production environments that need quick corrections on contrast and brightness, highlights and shadows, colour balance and saturation as well as sharpness of skin and non-skin tones. It even allows you to interact with images individually and apply customised corrections to each image.

Calculate Costs More Efficiently

XFlow's CostEstimate module makes every penny count by calculating material consumption, overhead costs and profit margins with amazing accuracy to improve your top and bottom line.

Benefit from a Flexible, Integrated Product Line

The flexible solution can grow with your company because it integrates seamlessly with other award-winning EFI products such as EFI Fiery® XF and EFI Colorproof™ XF and works with Fiery-driven printing devices. The XF client can be launched directly out of the workflow, enabling you to simplify the setup of your workflow processes more quickly and easily. Other non-EFI RIPs also are supported by PDF or postscript export. In addition, the solution is accessible via UniDriver in Macintosh and Windows® environments, which makes submitting jobs as easy as hitting 'print'!



Easy, versatile and powerful: XFlow's workflow modeler, ColorWise Module and browser-based RemoteJobTracker.

Don't miss your opportunity to get maximum productivity and achieve a high return on investment. Contact your local EFI reseller or sales representative now or visit www.efi.com/how-to-buy/.

Print to win with EFI

EFI (www.efi.com) is the world leader in digital print servers and controllers, superwide format printers and inks, wide-format printers, industrial inkjet printing systems and APPS solutions. EFI is dedicated to giving customers a competitive edge with award-winning, scalable solutions from creation to print that maximise productivity and increase profits. EFI maintains 23 offices worldwide.