



EFI Fiery® XF

Large to Superwide Format Inkjet RIP for Greater Productivity and Brilliant Color

Graphic Arts Solutions



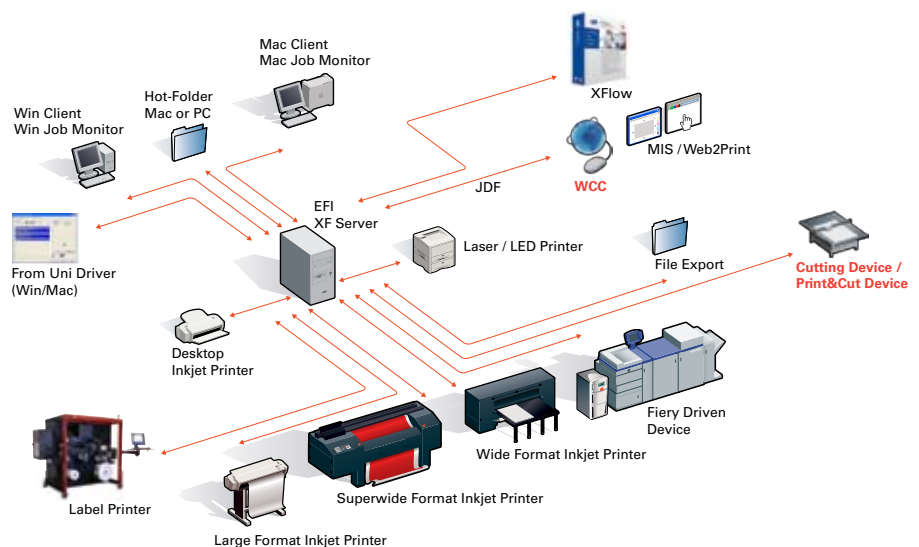
Large to Superwide Format Inkjet RIP for Greater Productivity and Brilliant Color

Increase your productivity and produce perfect print products. EFI™ Fiery® XF achieves a new dimension in colour quality and productivity for large to superwide format inkjet printing devices on banners, posters, signs and vehicle wraps! Powered by Bestcolor® Technology, Fiery XF unifies the handling of your printing devices and produces the most accurate and vibrant colours. The solution's automated workflow maximizes your investment by dramatically reducing production times. It is available in three configurations to match your personal business needs.

Makes production easy!

Fiery XF's intuitive, graphical user interface and tutorial wizards shorten your operators' learning curves – regardless of their skill level. In addition, the solution simplifies work routines and job management with several features such as integrated workflow-based job processing, a full set of powerful production tools and its preview feature with dedicated layout and editing capabilities, including last minute colour adjustments. The solution also allows you to do multiple tasks simultaneously, such as create proofs while printing other jobs.

EFI Fiery XF - One RIP for various applications.





Improve customer satisfaction with high colour quality

EFI Fiery XF provides you with sophisticated ICC-based colour management, enabling you to fulfill your customers' demands for accurate and consistent colours every time. The Intelligent Clean Color Technology offers vivid, saturated colour with optimum modulation and a clean appearance. It combines correct colour reproduction and uses the colour gamut of your printer to its fullest for eye-catching images with precise colour matching. Clean Color also provides you with the best settings for your setup, automatically taking the printer, media and profiles into consideration.

Fiery XF's Spot Color Module simulates and manages spot colours, while international spot colour tables are included to ensure correct colours. Unknown spot colours can easily be defined or simply linked to known spot colours. Changing a spot colour definition in the client on the fly is incredibly easy too.

The solution's linearization function works seamlessly with spectrophotometers, such as Barbieri and X-Rite, to produce consistent, accurate colour output every time. You also can optimize ICC profiles or do re-linearisations based on measurements and visual evaluations. Just use the tutorial wizards to guide you step-by-step through the process. In addition, the solution comes with Dynamic Wedge™, a revolutionary wedge technology for analyzing key and spot colours specifically within a job. The Dynamic Wedge™ lets you verify and improve colour accuracy with only a few clicks.

Adapts to customers' specific needs

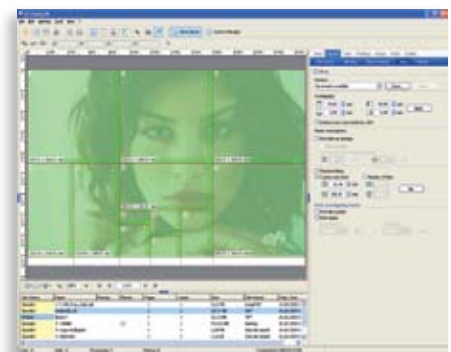
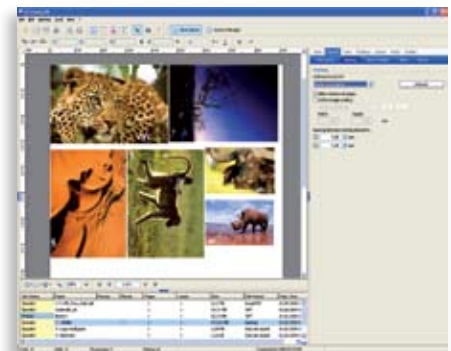
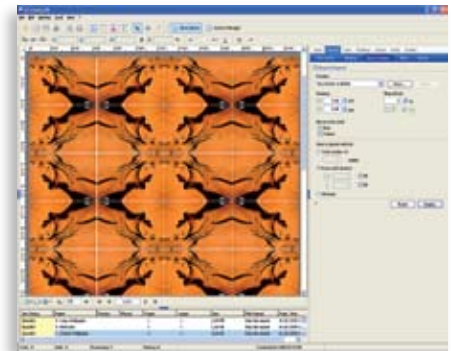
With EFI Fiery XF's client-server architecture, you can decentralize operations such as job monitoring and editing to achieve greater flexibility and productivity. The solution's cross platform integration allows you to use your existing Windows® and Macintosh® environments. In addition, Fiery XF's modular structure handles all your current and future printing needs, providing you the highest return on investment. For instance, you can add options, such as EFI XFlow, to more effectively manage different file formats and job quality levels, or the EFI Cut Server Option for a dedicated cutting solution that operates with more than 1,200 cutters and routing tables. You also can add our EFI Print MIS and Web-to-Print Solutions to streamline your workflow, increase your productivity and save you money by eliminating redundant production steps.

Fiery XF comes in three configurations to cater to your needs: Fiery XF Essential, Fiery XF Advanced and Fiery XF Premium. Every configuration includes at least one Printer Option M-XXL. Fiery XF Essential includes one, Advanced includes two and Premium includes four Printer Options M-XXL, one of the four potentially being a VUTEk printer. Each Printer Option M-XXL drives one printer out of the printer classes M, XL or XXL. A list of supported devices can be obtained from www.efi.com. Detailed information about Fiery XF's configurations is included in the Fiery XF features chart.

Solutions for the Color Supply Chain

Coupled with other EFI solutions, EFI Fiery XF is the answer to your challenges with the Color Supply Chain – the end-to-end process of producing good colour from creative design all the way to the final print production. The benefits are obvious: faster execution, reduced costs and consistent corporate colours.

Combined with EFI Web Control Center, EFI's web-based application for remote control and distribution of print jobs, you profit from the most efficient remote printing workflow ever.



The cost-effective Fiery XF RIP comes with a full set of production tools such as Tiling, Nesting, Step & Repeat, and many others.

XF Components

Fiery XF Basic Configurations

Fiery XF is available in the configurations Fiery XF Essential, Fiery XF Advanced and Fiery XF Premium. These configurations come with the cross-platform XF Server for Mac and Windows, an unlimited number of Clients as well as Spot Color Module and the Production Module with a complete set of production features. Additional product and output options allow you to expand your system to meet your specific needs.

Product options



Color Manager Option: Provides ICC-based tools for professional creation of ICC and device link profiles.



Color Verifier Option: Verifies the quality and reliability of your printouts through measuring and comparing colour values against ISO or own quality standards.



Cut Server Option: Offers a dedicated cutting option that works seamlessly with EFI XF solutions and with 1,200 supported cutters and routing tables from 70 different manufacturers. This option is for Windows only.



Dot Creator Option: Outputs contone data as screened prints or proofs to simulate the AM screening characteristics of the final run.



OneBit Option: Proofs the screening of the final run by using the screen data created by the filmsetter or platesetter RIP.



Proof Option: Delivers Ugra/FOGRA media wedge, file input formats CT/LW / Tiff-IT / Delta, supports Device Link Profiles.



Japanese Font Option: Comes with an integrated font download and additional Japanese Characters.

Output options



Printer Options M, XL and XXL: Supports a wide range of inkjet, LED and laser printers of various printer vendors; depending on the size of your printer:

Printer Option M for up to 18" or A2.

Printer Option XL for 24" printers.

Printer Option XXL for printers bigger than 24"

Dedicated Printer Options:

Printer Option VUTEK for EFI VUTEK® printers

Printer Option Rastek for EFI Rastek® printers

Printer Option OKI for OKI printers

Printer Option Special for Mimaki UJF-605

Print & Cut Option: Enables one-step Print & Cut on supported print & cut devices (includes a Printer Option XXL).



Fiery Option: Manages the output of colour files on xerographic devices driven by external and embedded Fiery digital print solutions.



File Export Option: Exports colour managed TIFF and PDF files.

Detailed information on the individual options can be found on the relevant data sheets. Find out more at www.efi.com.

System Requirements: www.efi.com/XF/Hardware-Requirements

Print to win with EFI

EFI (www.efi.com) is a world leader in customer-focused digital printing innovation. EFI's award-winning solutions, integrated from creation to print, deliver increased performance, cost savings and productivity. The company's robust product portfolio includes Fiery® digital color print servers; VUTEK® superwide digital inkjet printers, UV and solvent inks; Jetrion® industrial inkjet printing systems; print production workflow and management information software; and corporate printing solutions. EFI maintains 23 offices worldwide.